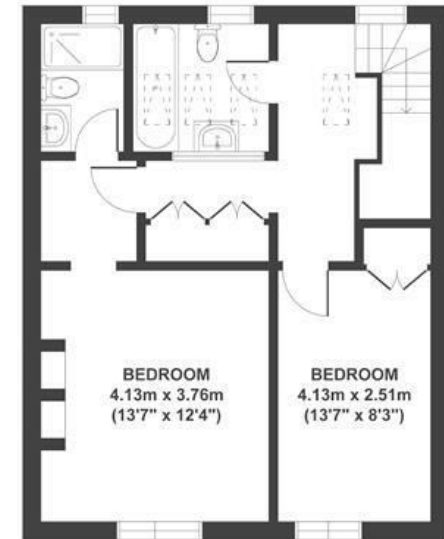
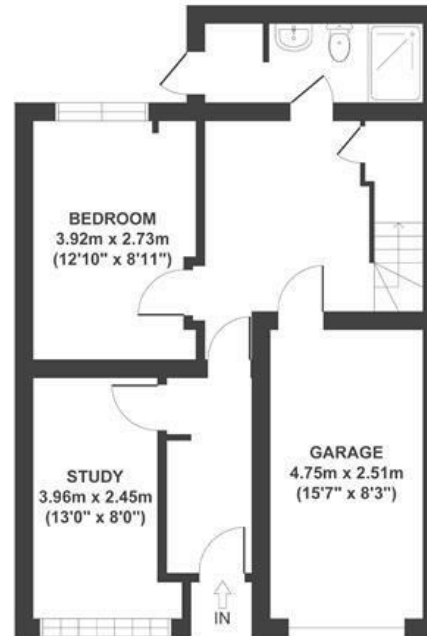


Princess Victoria Street CLIFTON

APPROXIMATE FLOOR AREA
162 SQM / 1744 SQFT



Boardwalk

Princess Victoria

, BRISTOL



£875,000



4 Bedrooms



BS8 4DB



2 Bathrooms

“Living in Clifton Village is fantastic; there are so many cafe's, shops, and restaurants right on your doorstep”

